

KWizCom Wiki Plus vs. SharePoint 2010 out-of-the-box Wiki

Written by: Nimrod Geva
KWizCom Product Group
January-2011

Table of Contents

<i>Introduction</i>	3
<i>Features comparison table</i>	4
Support for standard Wiki markup language	6
Embedded content rating	6
Clone page	9
Edit in Full Page mode	9
Wiki page printing	11
Content lifecycle management	13
Content templates	14
Improved content editing capabilities	16
Complete Tagging Solution	20
Support for RSS feeds/Alerts Subscriptions	22
Page-level discussions	22
Advanced reporting	24
Fully-customizable	27
<i>Appendix A – Supported wiki tags</i>	28

Introduction

KWizCom SharePoint **Wiki Plus** is an advanced enterprise Wiki solution for SharePoint. Its unique additional features make it the ideal tool for true cross-organization knowledge sharing.

This document describes the key features available in KWizCom Wiki Plus, which do not exist in Microsoft SharePoint 2010 out-of-the-box Wiki.

This should enable customers understand which wiki capabilities they get with SharePoint 2010, and what are the exact enhancements they get with KWizCom Wiki Plus.

Features comparison table

The following table compares relevant wiki features between KWizCom Wiki Plus and SharePoint out-of-the-box.

Feature	KWizCom Wiki Plus	SharePoint 2010	SharePoint 2007
Required SharePoint infrastructure	WSS/Foundation	MOSS Enterprise for Enterprise Wiki	N/A
Support for standard Wiki markup language	Yes	Partial	No
Content Rating (5 stars)	Yes	Yes, without remarks	No
Other rating methods: Voting, "Kicking"	Yes	No	No
Save and keep editing	Yes	Yes	No
Clone page	Yes	No	No
Edit in Full page mode	Yes	No	No
Export Wiki page to MS WORD, PDF	Yes	No	No
Improved rich content editing capabilities	Yes	Partial	No
Content lifecycle management	Yes	No	No
Tagging methods	Web 2.0 and Hierarchy	Web 2.0 only	No
Taxonomy navigation tools	Tag Cloud Tag Index Hierarchy Tree Tags menu	Tag Cloud	No
Import 3 rd -party taxonomies	Yes	No	No
Ability to tag external content	Yes	Through external lists (Enterprise edition only)	No
Support for RSS feeds / Alerting / Subscriptions on wiki pages	Yes	Yes	Partial-
Support for RSS feeds / Alerting / Subscriptions on categories/tags	Yes	Partial	No
Page-level discussions/notes	Yes	Yes	No
Wiki Page printing	Yes	No	No
Preview before save/print	Yes	Yes	No
Dynamic Content Templates	Yes	No (based on publishing layouts)	No

Feature	KWizCom Wiki Plus	SharePoint 2010	SharePoint 2007
Easily add images/movie clips/FLASH clips /attachments in one-shot	Yes	Partial	No
Emoticons	Yes	No	No
Supports embedded MS Visio charts	Yes	No	No
Enables adding source code to page	Yes	No	N/A
Automatic Table of Contents (TOC)	Yes	No	No
Enables editing part of a page	Yes	No	No
Supports distributed architecture (Easy linking between pages across different wiki sites and shared taxonomy)	Yes	Partial	No
Content snippets	Yes	No	No
Reusable content	Yes	Yes	No
Copy & Paste of images (CTRL-C/CTRL-V)	Yes	No	No
Copy & Paste from MS WORD (including styles, tables, images etc.)	Yes	No	No
Support for mapping images and setting absolute position	Yes	No	No
Advances user-level, configurable and printable reports (page views, leading authors etc.)	Yes	No	No
Embed a list view in the rich content area	Yes	Yes	No
Embed a remote list (from another site) in the rich content area	Yes	No	No

The following sections present some of the features in more details.

Support for standard Wiki markup language

KWizCom Wiki Plus:

Supports standard wiki markup language (Wikipedia style) – See Appendix A for Wiki markup details.

SharePoint 2010 wiki:

Supports only the "[[page]]" wiki tag, which enables the creation of new wiki pages while editing an existing page.

Embedded content rating

KWizCom Wiki Plus:

Users can rate and provide comments on wiki pages:

This procedure defines the Product Release Cycle (QA Department).

Procedure Details [\[Edit\]](#)

Product Release Cycle Definition [\[Edit\]](#)

The software development process proceeds through several stages that describe the development process proceeds.

Product Release Cycle (QA Department) [\[Edit\]](#)

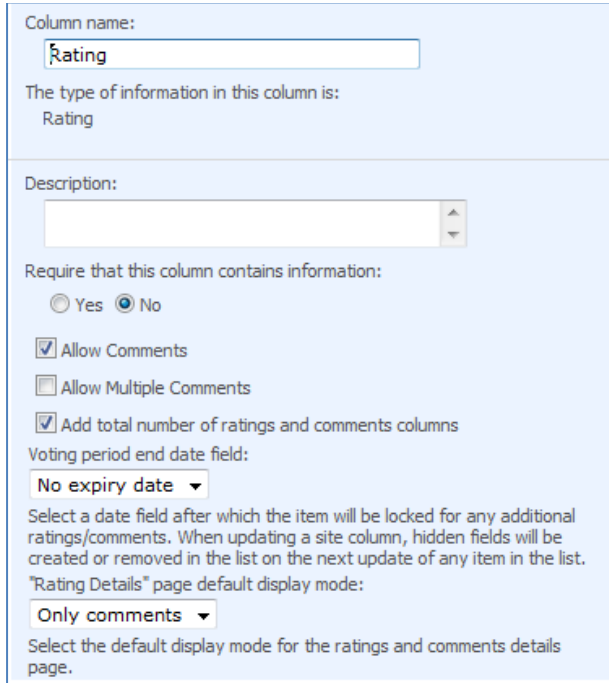
- create
- create
- analyze
- testing
- bug tra
- review
- regist
- update require

Created at 1/6/2011 11:17 AM by [\[User Name\]](#) (GMT-0500) Eastern Time (US and Canada) Total Views: 15

Rating : ☆☆☆☆ Ratings & Comments (Click the stars to rate the page)

Tags: [test](#)

As administrator you can define various settings for the rating functionality:



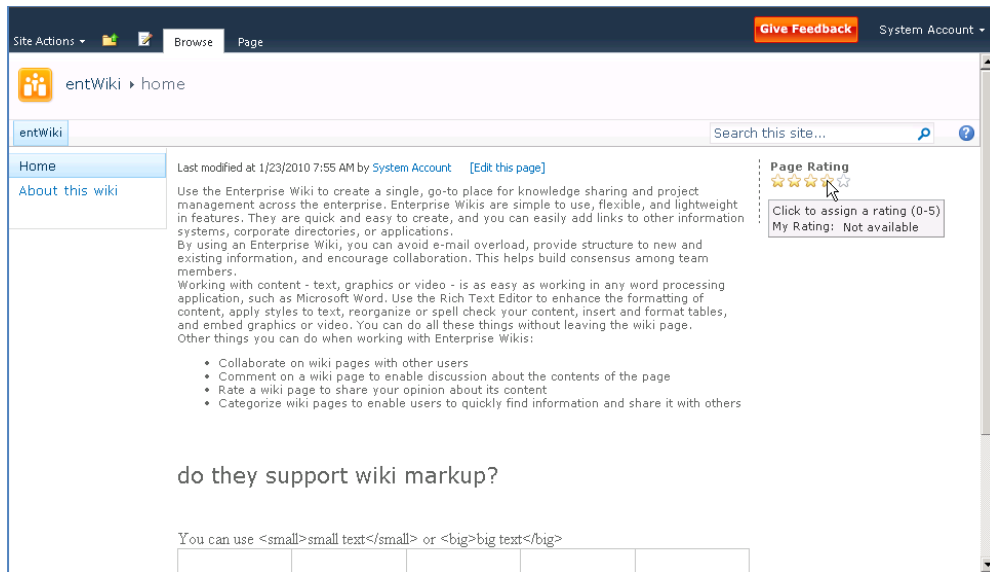
The screenshot shows a configuration form for a rating column. It includes fields for 'Column name' (set to 'Rating'), 'The type of information in this column is' (set to 'Rating'), and a 'Description' text area. There are radio buttons for 'Require that this column contains information' (set to 'No'), checkboxes for 'Allow Comments' (checked), 'Allow Multiple Comments' (unchecked), and 'Add total number of ratings and comments columns' (checked). A 'Voting period end date field' dropdown is set to 'No expiry date'. A text block explains that this date field locks the item for further ratings/comments. A 'Rating Details' page default display mode dropdown is set to 'Only comments'. A final instruction asks to select the default display mode for the ratings and comments details page.

These settings include:

- Allow user to provide also comments? (Yes/No)
- Allow a user provide multiple comments? (Yes/No)
- Define a voting period
- Define what readers can see (all ratings, only ratings that included comments etc.)
- Rating method (new) – Rating (5 stars), Voting (Thumb up/down) or kicking.

SharePoint 2010 wiki:

Wiki pages include 5-stars rating field:

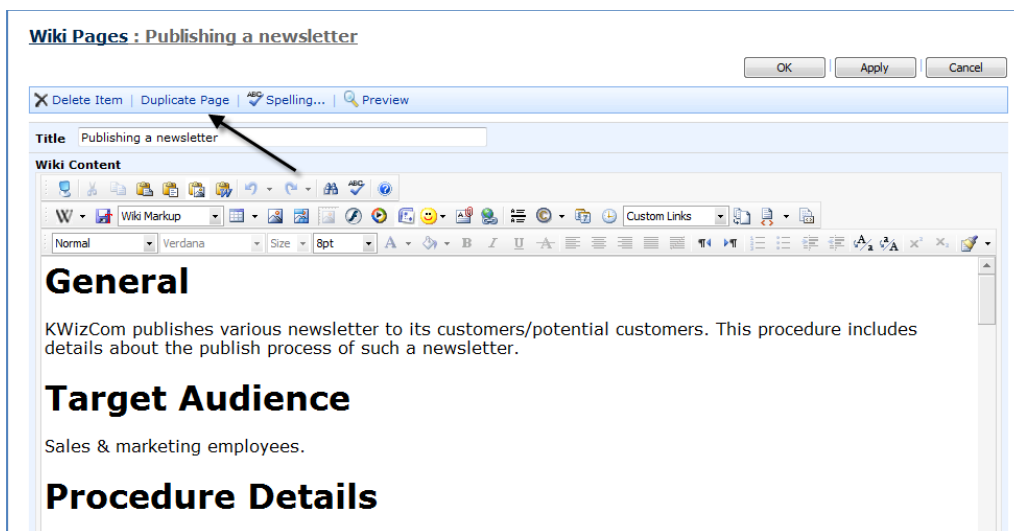


You cannot provide any comments (that clarify the rating you've provided).

Clone page

KWizCom Wiki Plus:

In Edit mode, an author can duplicate an existing page instead of creating a new page from scratch. This functionality simply saves time:



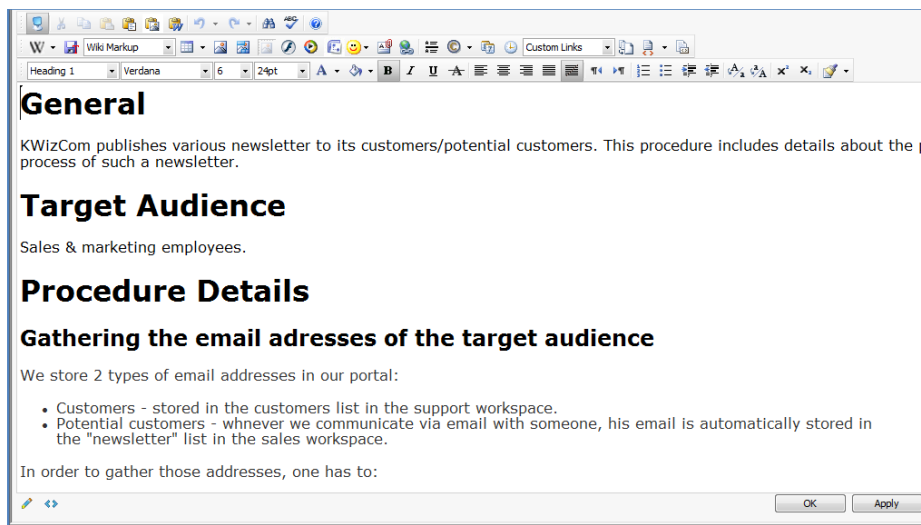
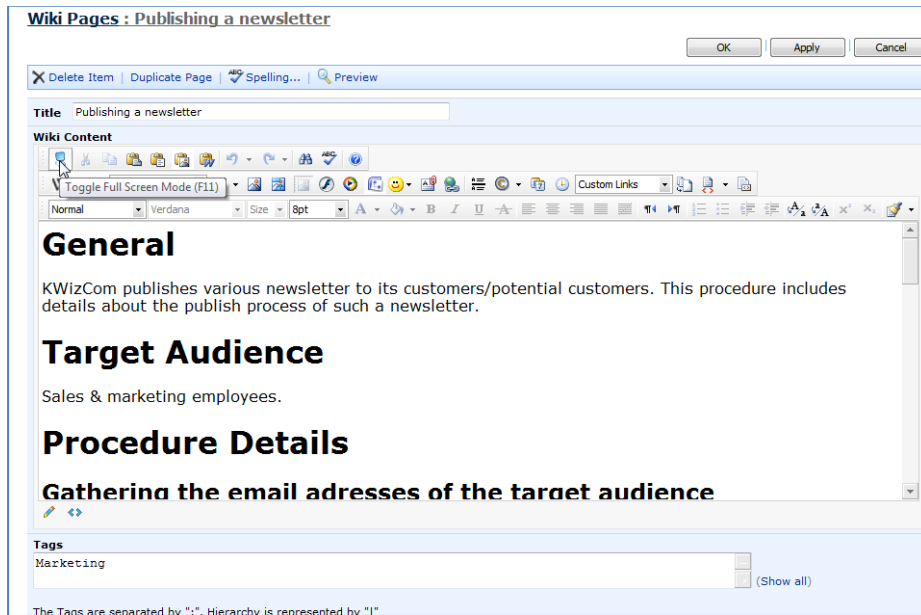
SharePoint 2010 wiki:

Doesn't have this functionality.

Edit in Full Page mode

KWizCom Wiki Plus:

Enables you to enlarge the content editor's size to full page, making editing more convenient:



SharePoint 2010 wiki:

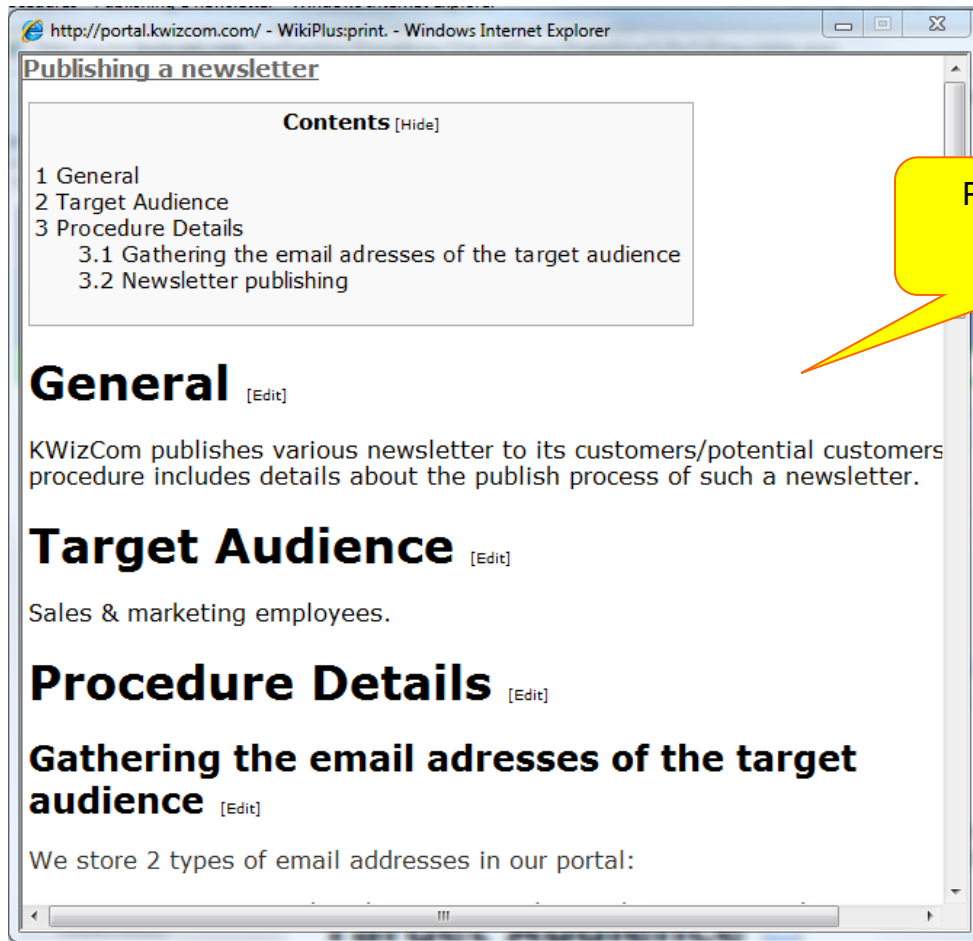
Doesn't have this functionality.

Wiki page printing

KWizCom Wiki Plus:

Enables printing a page without the navigation/branding elements coming from the Master page:





SharePoint 2010 wiki:

Doesn't have this functionality.

Content lifecycle management

Common Wiki-based solutions you may find in companies include for example:

- Support knowledgebase
- Corporate Procedure archive

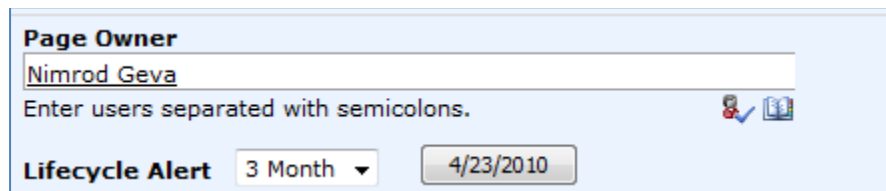
In any of those solutions, the organizations needs not just to produce the required articles, but also to make sure they are updated and do not become obsolete.

Content lifecycle management feature enables content editors to properly manage the lifecycle of the existing article and avoid a situation of having obsolete/inaccurate content.

KWizCom Wiki Plus:

When you create an article, by default you become the page's owner, which means: you are responsible of keeping this page to be up to date (you can also define other owners for a page).

Additionally, when you create a wiki page, you define the page's **lifecycle alert**:



The screenshot shows a form with the following elements:

- Page Owner** section with a text input field containing "Nimrod Geva".
- Below the input field, the text "Enter users separated with semicolons." and two small icons (a person and a document).
- Lifecycle Alert** section with a dropdown menu set to "3 Month" and a date input field set to "4/23/2010".

A lifecycle alert value of 3 months for example, means that you expect that for some reason the content of this page will require you to update it in 3 months (because you are about to produce a new product or release a new software version).

When the page is about to expire, the page owner will receive an email alert informing him that the page is about to be expired.

The owner will then have the option to confirm expiration or set a new expiration date.

If the owner does not renew the page, readers will see an "Obsolete" caption, indicating that the page is expired and was not renewed by its owner.

SharePoint 2010 wiki:

Doesn't have this functionality.

Content templates

Content templates enable contributors to create wiki pages faster, by using templates containing preconfigured structure and content.

KWizCom Wiki Plus:

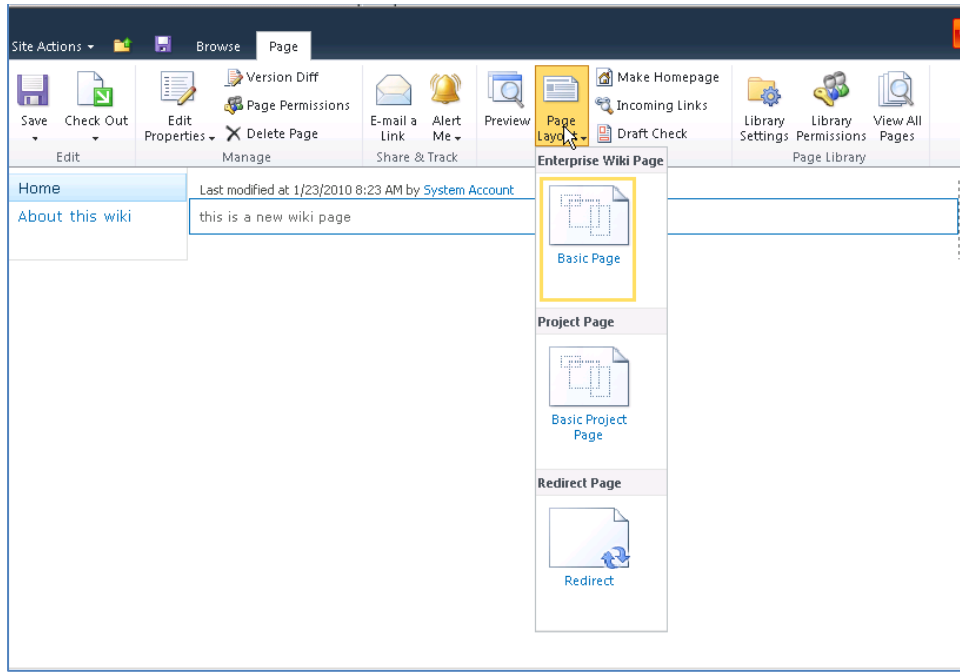
Supports Dynamic content templates. Dynamic content templates are created by authorized authors, simply by saving a wiki page as a template (same as in MS WORD). Those content templates are available to other authors in the same or in other wiki sites when creating a new page.

[Create a new Wiki page](#)
Use this page to create a new WikiPlus page. You can add any content you want to the new page after you create it.

<p>Name</p> <p>The title of a wiki page is displayed at the top of the page and can be used when creating a link to an existing page. Fill this field only if you want it to be different than the page's name.</p>	<p>Name: *</p> <input type="text" value="Sales Manager role"/> .aspx
	<p>Title:</p> <input type="text"/> <small>Type a title for your Wiki Page. The file name appears in headings and links throughout the site.</small>
<p>Content</p> <p>Select a content template.</p>	<p>Choose a Content Template:</p> <input type="text" value="KB Article"/> <input type="text" value="Procedure"/> <input type="text" value="Source Code Sample"/>
<p>Preview</p> <p>==SUMMARY== This procedure describes [add you text here] ==INTRODUCTION== Customers may issue complaints through various channels provided today: # Company web site feedback form # Sales Live Support # support phone/email channel</p> <p>In order to provide the best level of service that we all are committed to, the following procedure provides the guidelines for the management of such customer complaints.</p> <p>==Procedure Details== [Here you should provide full procedure details - steps and who does what in each step]</p>	

SharePoint 2010 wiki:

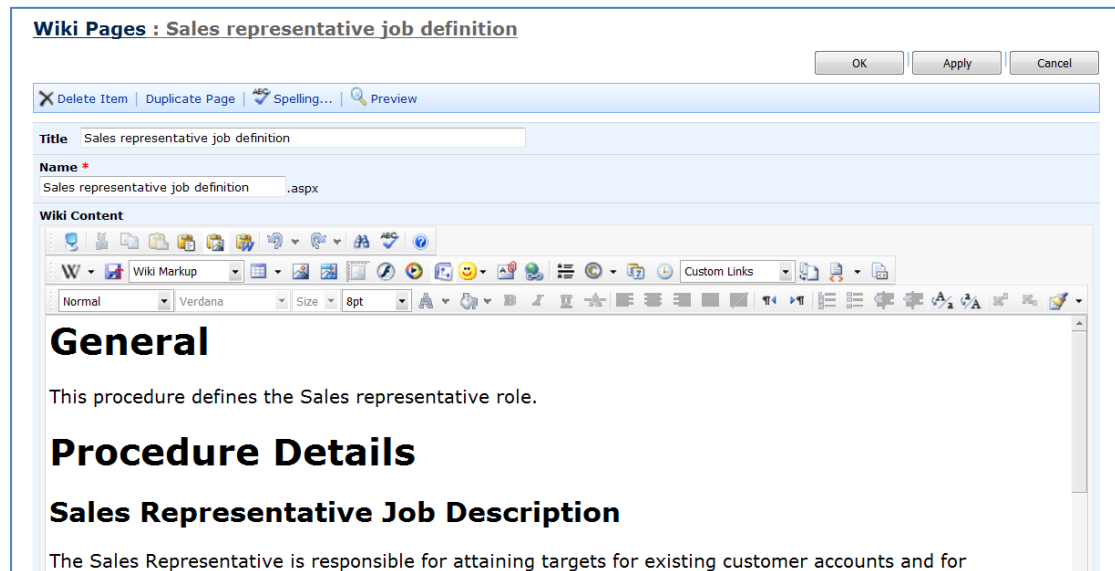
SharePoint 2010 Enterprise Wiki pages are based on SharePoint's Publishing feature. This enables designers/administrators create layouts (which are static templates) by using SharePoint Designer, and contributors can then use those layouts for a wiki page:



So, every time you need a new content template, you need someone with technical skills to create a new layout for you.

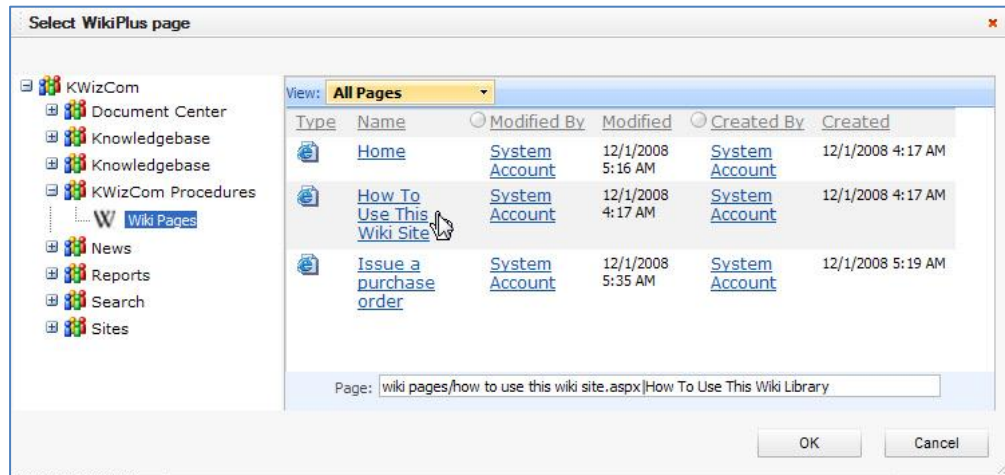
Improved content editing capabilities

Wiki Plus provides an enhanced Wiki and HTML WYSWYG editor (based on Telerik editor control) for SharePoint Wiki pages.



The Wiki Plus editor facilitates the production of high quality web pages – providing enhanced Web/Wiki editing features. Some of its additional features are:

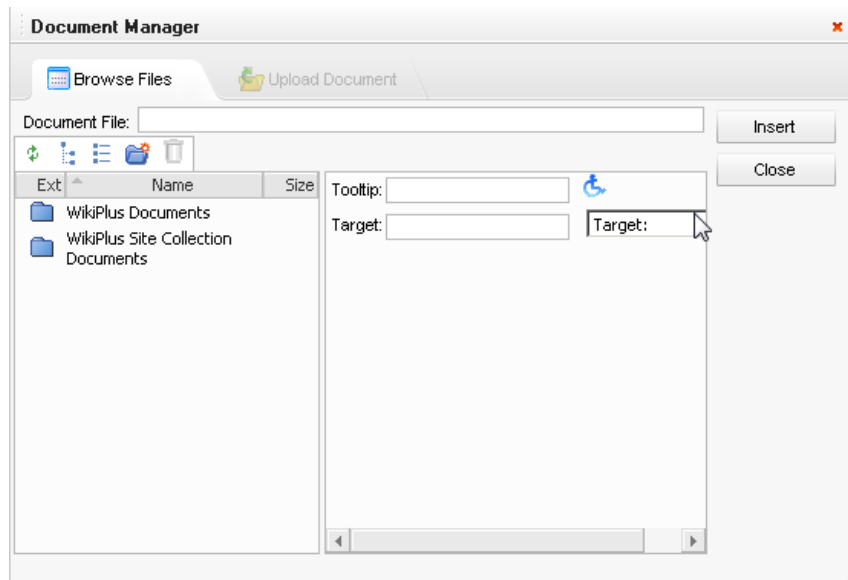
- **Support for Wiki Markup**
We have implemented a Wiki Markup parser, embedded in this new editor and thus enabling users who are familiar with the Wiki markup to keep using this markup inside the SharePoint environment.
- **Enable easy linking between wiki pages**
With the Wiki Plus editor you can implement various wiki sites and easily link between pages located in different wiki libraries/sites, by using the "Add link to an existing wiki page" wizard:



- **Easy management of file attachments**

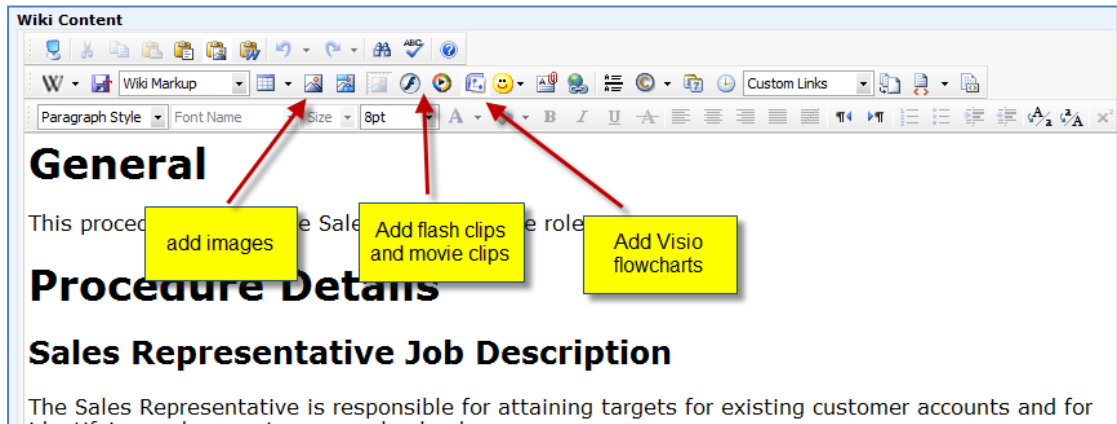
Want your wiki page to include file attachments?

No problem! Use the *Document Manager* to upload and link to any documents in a single operation:

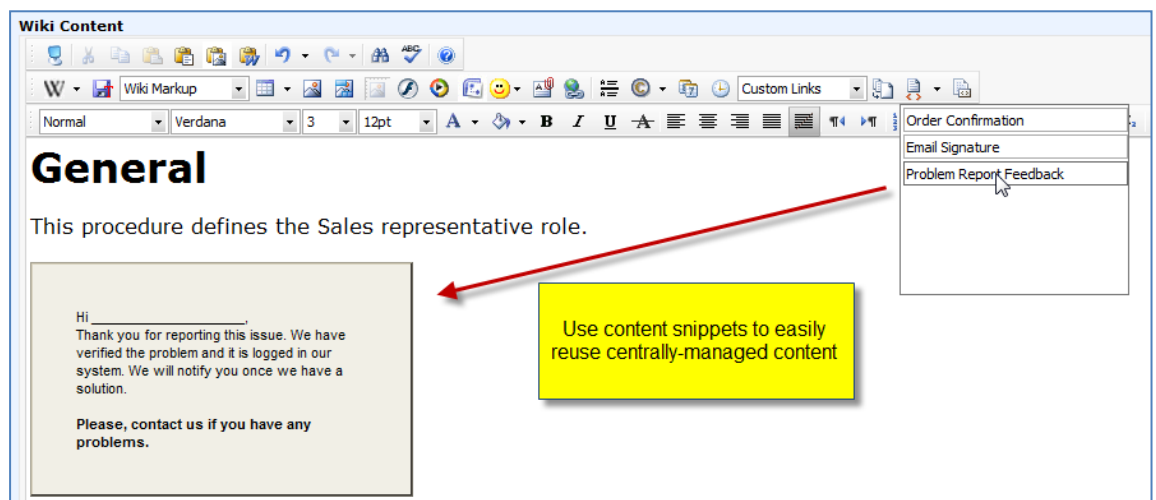


- Embedding of objects such as tables, pictures, symbols, emoticons, flash, movie clips, time and date – powerful and


flexible:



- Content Snippets & Reusable Content
Wiki Plus enables authors to easily manage and share reusable pieces of content. Sharing of such content is possible in 2 ways:
 - **Content Snippets** – those are content templates that enable authors use them and later on customize the content according to the specific need.
 - **Reusable Content** – those are pieces of content that are managed centrally and can be embedded in Wiki pages. Once such a reusable content is updated, all pages that have it embedded will be updated appropriately.

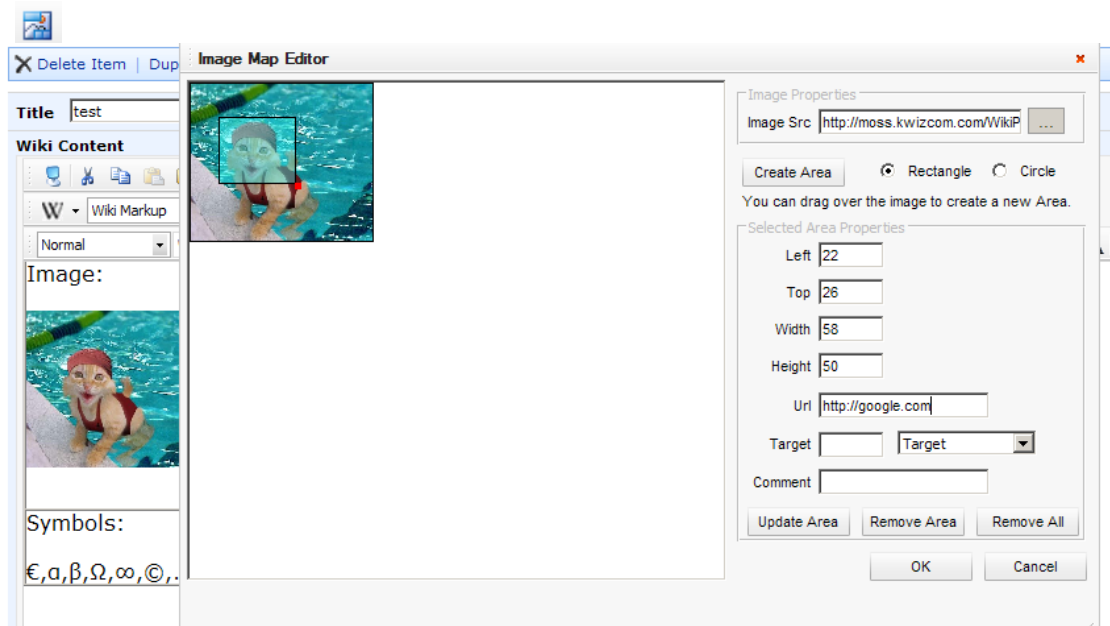


- Insertion of web links either freely or from pre-prepared lists
- Insertion of Source Code



```
<?xml version="1.0" encoding="utf-8"?>
<WorkflowInfo Language="en-us">
<Actions>
<Action Name="NewAction">
... definition...
</Action>
</Actions>
</WorkflowInfo>
```

- Mapping images
Easily create image maps on top of your images to provide intuitive navigation to content:



Complete Tagging Solution

Wiki Plus includes a SharePoint Tagging Feature that provides you with a complete tagging solution for the wiki pages.

Some of the tagging capabilities are:

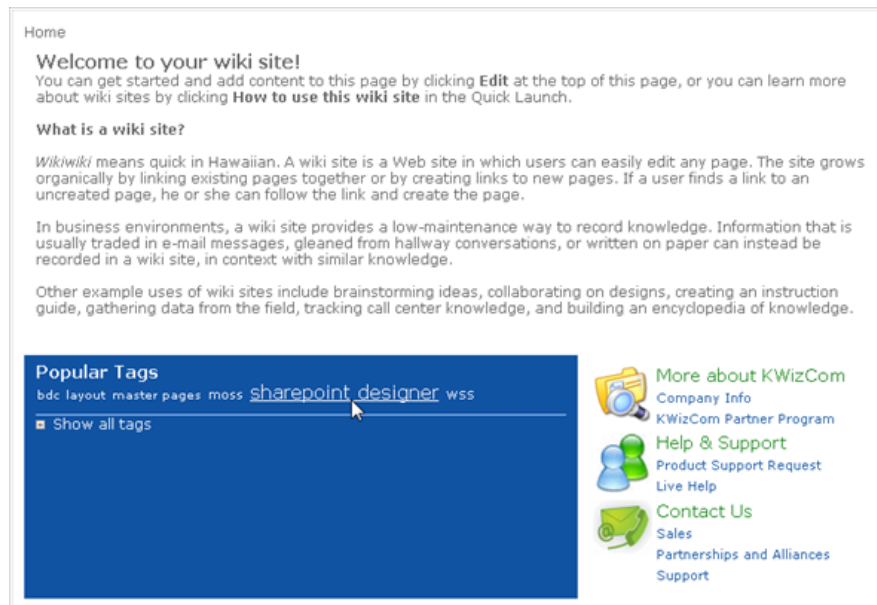
- **Tag field type**

When editing a wiki page you can tag it manually or by using the **auto complete** feature:



- **Tag Cloud**

The tag cloud enables you to find wiki content by tags and to subscribe to certain tags.



Tag Pages List

sharepoint [Subscribe](#) | [Go Back](#)
Tag: designer

[Applying master pages inheritance](#)
Tags: sharepoint designer, master pages, wss
<http://moss.litwareinc.com/WikiPlus1/Wiki Pages/Applying master pages inheritance.aspx> - System Account - 4/26/2008

[BDC preview](#)
Tags: sharepoint designer, bdc
<http://moss.litwareinc.com/WikiPlus1/Wiki Pages/BDC preview.aspx> - System Account - 4/26/2008

[How to create personal views](#)
Tags: wss, sharepoint designer
<http://moss.litwareinc.com/WikiPlus1/Wiki Pages/How to create personal views.aspx> - System Account - 4/26/2008

[How to create yur 1st MOSS 2007 Layout](#)
Tags: sharepoint designer, moss, layout
<http://moss.litwareinc.com/WikiPlus1/Wiki Pages/MOSSLayout1.aspx> - System Account - 4/26/2008

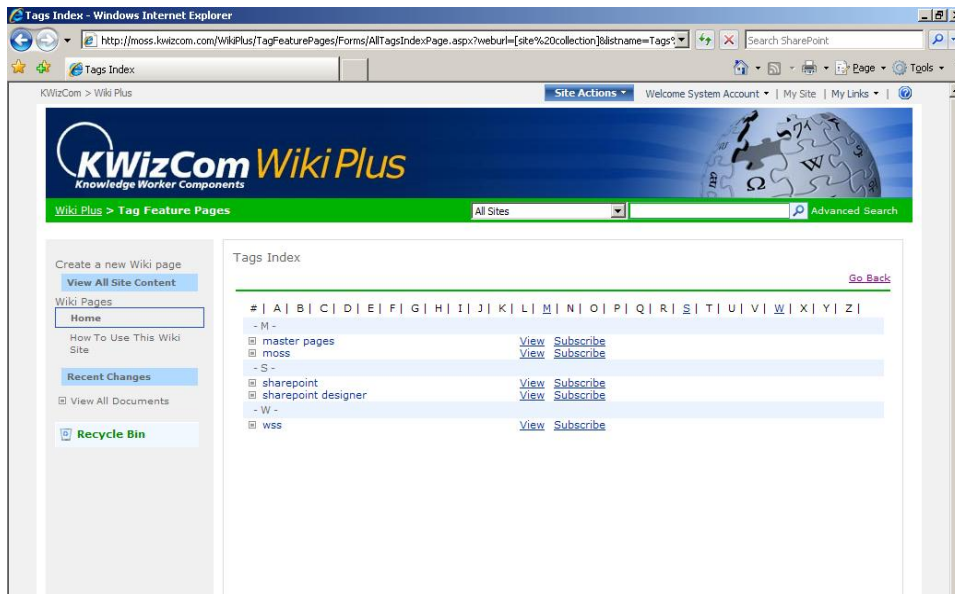
[Introduction to Content types and publishing layouts](#)
Tags: sharepoint designer, moss
<http://moss.litwareinc.com/WikiPlus1/Wiki Pages/Introduction to Content types and publishing layouts.aspx> - System Account - 4/26/2008

[MOSS 2007 SP1 additions](#)
Tags: sharepoint designer
<http://moss.litwareinc.com/WikiPlus1/Wiki Pages/MOSS 2007 SP1 additions.aspx> - System Account - 4/26/2008

[Using the URL protocol](#)
Tags: wss, sharepoint designer
<http://moss.litwareinc.com/WikiPlus1/Wiki Pages/Using the URL protocol.aspx> - System Account - 4/26/2008

- **Tags Index**

The Tag index displays all existing tags ordered by ABC, enabling users to view all wiki pages by tag, and subscribe for an alert when there's new/updated content linked to a required tag.



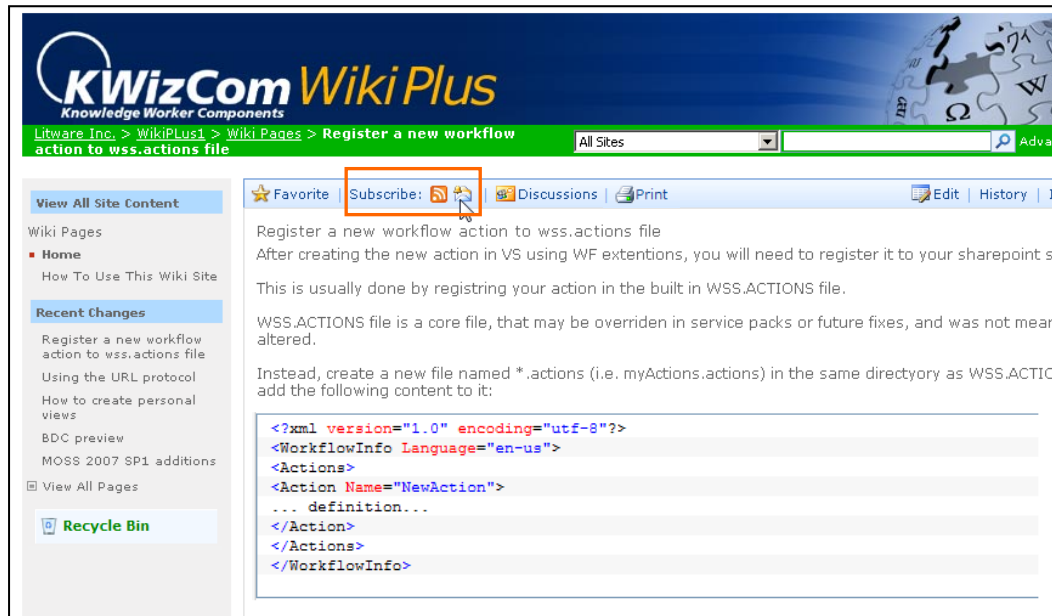
Tags Index

| A | B | C | D | E | F | G | H | I | J | K | L | M | N | O | P | Q | R | S | T | U | V | W | X | Y | Z |

- M -
- master pages [View](#) [Subscribe](#)
- moss [View](#) [Subscribe](#)
- S -
- sharepoint [View](#) [Subscribe](#)
- sharepoint designer [View](#) [Subscribe](#)
- W -
- wss [View](#) [Subscribe](#)

Support for RSS feeds/Alerts Subscriptions

Users may subscribe to an RSS feed/email alert about added and changed pages. Any page addition or update will generate an RSS feed/email alert.



Page-level discussions

Users can create a discussion thread that is automatically connected to a wiki page, by simply clicking the "Discussions" button:

KWizCom Wiki Plus
Knowledge Worker Components

Litware, Inc. > WikiPlus1 > Wiki Pages > Register a new workflow action to wss.actions file

All Sites

Favorite | Subscribe: | Discussions | Print | Edit | History | I

View All Site Content

Wiki Pages

- Home
- How To Use This Wiki Site

Recent Changes

- Register a new workflow action to wss.actions file
- Using the URL protocol
- How to create personal views
- BDC preview
- MOSS 2007 SP1 additions

View All Pages

Recycle Bin

Register a new workflow action to wss.actions file

After creating the new action in VS using WF extensions, you will need to register it to your sharepoint site. This is usually done by registering your action in the built in WSS.ACTIONS file.

WSS.ACTIONS file is a core file, that may be overridden in service packs or future fixes, and was not meant to be altered.

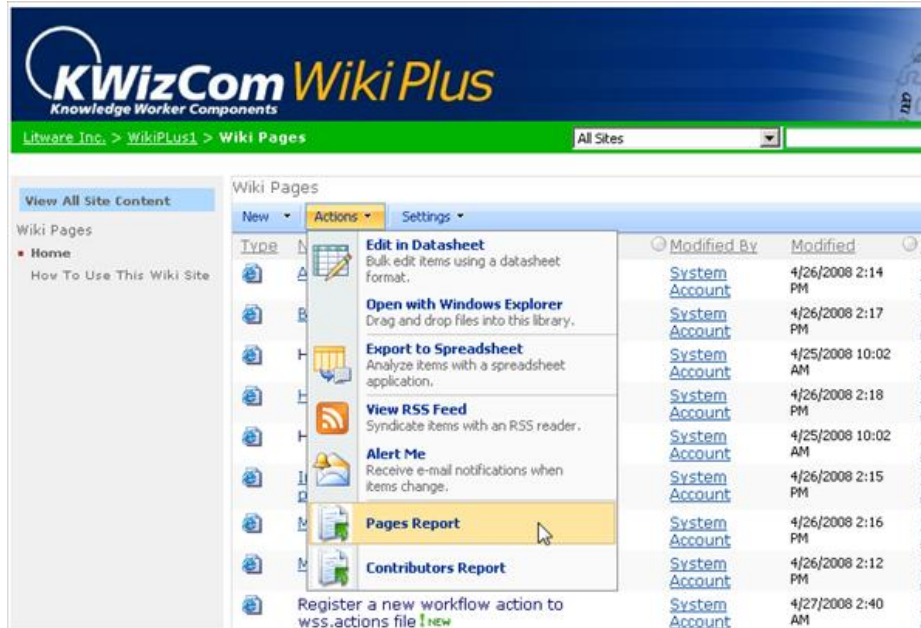
Instead, create a new file named *.actions (i.e. myActions.actions) in the same directory as WSS.ACTIONS and add the following content to it:

```
<?xml version="1.0" encoding="utf-8"?>
<WorkflowInfo Language="en-us">
  <Actions>
    <Action Name="NewAction">
      ... definition...
    </Action>
  </Actions>
</WorkflowInfo>
```

Advanced reporting

Wiki Plus provides a set of usage reports, based on actual wiki pages creation and updates.

Authorized Users (those who belong to the "Knowledge Trustees" group) can access the wiki plus reports through the "Wiki Pages" Actions menu:



Administrators can access the Wiki Plus reports through the "Site Actions > Site Settings" menu:

Site Settings

Site Information

Site URL: <http://moss.litwareinc.com/WikiPLus1/>
 Mobile Site URL: http://moss.litwareinc.com/WikiPLus1/_layouts/mobile/default.aspx
 Version: 12.0.0.4518

Users and Permissions

- People and groups
- Advanced permissions

Look and Feel

- Title, description, and icon
- Master page
- Navigation
- Tree view
- Site theme
- Save site as template
- Reset to site definition
- Searchable columns

Galleries

- Master pages
- Site content types
- Site columns

Site Administration

- Regional settings
- Site libraries and galleries
- Site usage reports
- User alerts
- RSS
- Search visibility
- Sites and workspaces
- Site features
- Delete this site
- Content and structure
- Content and structure logs

WikiPlus usage reports


WikiPlus usage reports

- Pages Report
- Contributors Report

The available reports are:

Pages Report

WikiPlus Pages Report

 Close

Scope: Site Collection Site Wiki library

URL:

From Date: To Date:

Show: viewed pages

Site	Wiki Library	Page	Creation Date	# Views
http://moss.litwareinc.com/WikiPLus1/	Wiki Pages	How To Use This Wiki Site.aspx	2008-04-25 17:02:48	6
http://moss.litwareinc.com/WikiPLus1/	Wiki Pages	Using the URL protocol.aspx	2008-04-26 21:19:11	3
http://moss.litwareinc.com/WikiPLus1/	Wiki Pages	MOSSLAYOUT1.aspx	2008-04-26 21:12:05	2
http://moss.litwareinc.com/WikiPLus1/	Wiki Pages	Applying master pages inheritance.aspx	2008-04-26 21:13:49	2
http://moss.litwareinc.com/WikiPLus1/	Wiki Pages	Introduction to Content types and publishing layouts.aspx	2008-04-26 21:15:20	2
http://moss.litwareinc.com/WikiPLus1/	Wiki Pages	MOSS 2007 SP1 additions.aspx	2008-04-26 21:16:22	2
http://moss.litwareinc.com/WikiPLus1/	Wiki Pages	BDC preview.aspx	2008-04-26 21:17:01	2

Contributors Report

WikiPlus Contributors Report

 Close

Scope: Site Collection Site Wiki library

URL:

From Date:  To Date: 

Show:  contributors

User	Full Name	Email	# Created Pages	# Updated Pages
SHAREPOINT\system	System Account		8	11

Fully-customizable

Wiki Plus is a SharePoint add-on. As such, it is completely built out of standard SharePoint modules: Features, Master page, site template, Library template, content types and web parts.

This means that while you deploy Wiki Plus, you still benefit from ALL other SharePoint features, integrated in your enterprise wiki solution (Search, alerts, permissions, versions, web parts etc.).

So, customizing Wiki Plus to any needed Collaboration business need is as easy as customizing standard SharePoint!

Wiki Plus exposes all graphic elements, so its layout can be fully customized by customers and integrators.

- All styles are defined in a standard CSS file located in:
[Program Files\Common Files\Microsoft Shared\web server extensions\12\TEMPLATE\LAYOUTS\KWizCom_Wikiplus\defaultWiki.css.](#)
- The top banner is located in the same folder and can be replaced with your own requested banner.

For detailed customization guidelines please review Wiki Plus Customization guide which can be found here:

<http://www.kwizcom.com/ProductPage.asp?ProductID=524&ProductSubNodeID=529>

Appendix A – Supported wiki tags

This section presents all Wiki tags supported by KWizCom Wiki Plus.

Please be noted that most of this markup is not necessary since the Wiki Plus editor enables editing and formatting functions through its toolbars and menus (So wiki markup is not really needed)

Links and Urls

What viewers see	What you type in Wiki Plus editor
<p>A link to another wiki page.</p> <p>Example:</p> <p>Editing custom list forms is done with SPD.</p>	<p>Editing custom list forms is done with <code>[[SPD]]</code>.</p>
<p>A link to another wiki page, where the displayed link title is different than the wiki page's name.</p> <p>The target page name must be placed first, then the title that will be displayed second.</p> <p>Example:</p> <p>Editing custom list forms is done with SPD.</p>	<p>Editing custom list forms is done with <code>[[SharePoint Designer SPD]]</code>.</p>
<p>Links to special wiki pages</p> <ol style="list-style-type: none"> Link to the "incoming links" page (that show all pages that link to a requested page) <p>Example:</p> <p>Special:Whatlinkshere/Home</p> <ol style="list-style-type: none"> Link to a page's "History" page (that shows all versions of the page) 	<p><code>[[Special:Whatlinkshere/Home]]</code></p> <p><code>[[Special:Recentchangeslink/Home]]</code></p>

<p>Example: Special:Recentchangeslink/Home</p>	
<p>Links to other resources (not Wiki pages).</p> <ol style="list-style-type: none"> 1. URL Example: http://www.wikipedia.com/ 2. Named link Example: Wikipedia 3. Unnamed link Example: [1] 	<pre>http://en.wikipedia.org/ [http://en.wikipedia.org Wikipedia] [http://en.wikipedia.org/]</pre>
<p>Display various date formats</p> <p>Example:</p> <ol style="list-style-type: none"> 1. July 20, 1969 2. 20 July 1969 3. 1969-07-20 4. 1969-07-20 	<pre># [[July 20]], [[1969]] # [[20 July]] [[1969]] # [[1969]]-[[07-20]] # [[1969-07-20]]</pre>
<p>Links to media files (sound/video)</p> <p>The default library for images and other media files is "WikiPlus images" library.</p> <p>Example:</p> <p>Click here to hear his latest sound track</p>	<pre>[[media:jj-latest.ogg sound track]]</pre>

Images:

What viewers see	What you type in Wiki Plus editor
<p>An Image. Images are stored in "WikiPlus images" library.</p> <p>Example:</p> 	<pre>[[Image:KWizCom-logo.gif]]</pre>
<p>An image with alternative text.</p> <p>Example:</p> 	<pre>[[Image:KWizCom-logo.gif KWizCom - Knowledge Worker Components]]</pre>
<p>A picture resized to required size.</p> <p>Example: (resized to 50 px)</p> 	<pre>[[Image:KWizCom-logo.gif 50px]]</pre>
<p>Linking directly to an image without displaying it.</p> <p>Example:</p> <p>Image of KWizCom logo</p>	<pre>[[[:media: KWizCom-logo.gif Image of KWizCom logo]]]</pre>
<p><DIV > tags</p>	<p>Example:</p> <pre><div style="display:inline; width:220px; float:right;"> Place images here </div></pre>

Character formatting:

What viewers see	What you type in Wiki Plus editor
<p>Underlined/Bold/Italic/strikeout formatting.</p> <p>Example:</p> <p><u>Underlined text</u></p> <p><i>Italicized text</i></p> <p>Bold text</p> <p><i>Italicized & Bold text</i></p> <p>strike through</p>	<pre><u>underlined text</u> ''Italicized text'' '''Bold text''' ''''Italicized & Bold text'''' <s>strike through</s></pre>
<p>Small/Big text tags</p> <p>Example:</p> <p>You can use <small>small text</small> or big text.</p>	<p>You can use <code><small>small text</small></code> or <code><big>big text</big></code></p>
<p>Invisible text (source comments)</p> <p>These are editor comments, not intended for viewers.</p>	<pre><!-- comments --></pre>
<p>Diacritical marks:</p> <p>Example:</p> <p>À Á Â Ã Ä Å Æ Ç È É Ê Ë Ì Í Î Ñ Ò Ó Ô Õ Ö Ø Ù Ú Û Ü ß à á â ã ä å æ ç è é ê ë ì í î ï ò ó ô œ õ ö ø ù ú û ü ÿ</p>	<pre>&Agrave; &Aacute; &Acirc; &Atilde; &Auml; &Aring; &AElig; &Ccedil; &Egrave; &Eacute; &Ecirc; &Euml; &Igrave; &Iacute; &Icirc; &Iuml; &Ntilde; &Ograve; &Oacute; &Ocirc; &Otilde; &Ouml; &Oslash; &Ugrave; &Uacute; &Ucirc; &Uuml; &szlig; &agrave; &aacute; &acirc; &atilde; &auml; &aring; &aelig; &ccedil; &egrave; &eacute; &ecirc; &euml; &igrave; &iacute; &icirc; &iuml; &ntilde; &ograve;</pre>

	<p>&oacute; &ocirc;</p> <p>&oelig; &otilde; &ouml; &oslash;</p> <p>&ugrave; &uacute;</p> <p>&ucirc; &uuml; &yuml;</p>
<p>Punctuation</p> <p>Example:</p> <p>¿ ¡ § ¶</p> <p>† ‡ • —</p> <p>< > « »</p> <p>‘ ’ “ ”</p>	<p>&iquest; &iexcl; &sect; &para;</p> <p>&dagger; &Dagger; &bull; &ndash;</p> <p>&mdash;</p> <p>&lsaquo; &rsaquo; &laquo;</p> <p>&raquo;</p> <p>&lsquo; &rsquo; &ldquo; &rdquo;</p>
<p>Commercial symbols</p> <p>Example:</p> <p>™ © ® ¢ € ¥</p> <p>£ ¤</p>	<p>&trade; &copy; &reg; &cent;</p> <p>&euro; &yen;</p> <p>&pound; &curren;</p>
<p>Subscripts</p> <p>Example:</p> <p>x_1</p>	<p>x<sub>1</sub> or</p> <p>x&#8320;</p>
<p>Superscripts</p> <p>Example:</p> <p>x^1</p> <p>$\epsilon_0 = 8.85 \times 10^{-12} \text{ C}^2 / \text{J m}.$</p>	<p>x<sup>1</sup> or</p> <p>x&#8304; x&sup1;</p> <p>&epsilon;<sub>0</sub> =</p> <p>8.85 &times;</p> <p>10<sup>&minus;12</sup></p> <p>C&sup2; / J m.</p>
<p>Greek characters</p> <p>Example:</p>	<p>&alpha; &beta; &gamma; &delta;</p> <p>&epsilon; &zeta;</p> <p>&eta; &theta; &iota; &kappa;</p>

<p>α β γ δ ε ζ η θ ι κ λ μ ν ξ ο π ρ σ ς τ υ φ χ ψ ω Γ Δ Θ Λ Ξ Π Σ Φ Ψ Ω</p>	<p>&lambda; &mu; &nu; &xi; &omicron; &pi; &rho; &sigma; &sigmaf; &tau; &upsilon; &phi; &chi; &psi; &omega; &Gamma; &Delta; &Theta; &Lambda; &Xi; &Pi; &Sigma; &Phi; &Psi; &Omega;</p>
<p>Mathematical characters</p> <p>Example:</p> <p>∫ ∑ ∏ √ - ± ∞ ≈ α ≡ ≠ ≤ ≥ × · ÷ ∂ ' " ∇ ‰ ° ∴ ∵ ∅ ∈ ∉ ∩ ∪ ⊂ ⊃ ⊆ ⊇ ¬ ∧ ∨ ∃ ∀ ⇒ ⇐ ⇓ ⇑ ⇔ → ↓ ↑ ← ↔</p>	<p>&int; &sum; &prod; &radic; &minus; &plusmn; &infin; &asymp; &prop; &equiv; &ne; &le; &ge; &times; &middot; &divide; &part; &prime; &Prime; &nabla; &permil; &deg; &there4; &alefsym; &oslash; &isin; &notin; &cap; &cup; &sub; &sup; &sube; &supe; &not; &and; &or; &exist; &forall; &rArr; &lArr; &dArr; &uArr; &hArr; &rarr; &darr; &uarr; &larr; &harr;</p>